

Are starting wages reduced by an insurance premium for preventing wage decline?

Testing the prediction of Harris and Holmstrom (1982)

joop hartog

University of Amsterdam

pedro raposo

Catolica Lisbon School of Business and Economics

Abstract

In the model of Harris and Holmstrom (1982) workers pay an insurance premium to prevent a wage decline. As employers are unable to assess the ability of a labour market entrant, they would offer a wage equal to expected productivity of the worker's category and adjust it with unfolding information on true individual productivity. Workers are willing to accept a reduction in starting wage to prevent a reduction in their wage when their productivity is revealed to be below the expected value for their category. While Harris and Holmstrom indicate crystal clear how the prediction can be tested, this has never been done. Using Portuguese data covering virtually the entire labour force, we find that the prediction is unequivocally rejected.

Keywords: risk premium, starting wages, unknown productivity, wage rigidity

JEL: J310; D860

First draft, June 2014; this draft February 24 2015
j.hartog@uva.nl;pedro.raposo@clsbe.lisboa.ucp.pt

1. *The Harris and Holmstrom prediction*

In an influential paper, Harris and Holstrom (1982) predicted that starting wages for labour market entrants are depressed by an insurance premium that employers withhold in return for the guarantee that wages will not be reduced when initially unknown worker productivity is revealed. A standard (myopic) competitive model with risk neutral agents would predict that in the face of unknown productivity of entering graduates, employers would pay the expected productivity of the graduates and then adjust wages as they gradually learn workers' individual productivity. However, this may entail wage decline for workers revealed to have low productivity. To avoid that, workers prefer an implicit contract where the employer rules out wage reductions and workers accept a starting wage below expected productivity. The insurance premium will depend on the dispersion of productivity in the worker's class. In their own words, Harris and Holmstrom (HH henceforth) "show that the market wage of a worker is his current mean perceived productivity minus a term which depends only on his age and the precision of beliefs about his productivity. This second term may be thought of as an insurance premium for the downward rigidity of wages. We show that this premium decreases both with age and precision." Risk neutral firms will offer a contract with downward wage rigidity and an insurance premium that gradually diminishes as information on ability becomes more precise.

Most interestingly, HH provide a precise recipe for testing their prediction¹: uncertainty about productivity of the youngest workers is indicated by the observed dispersion of productivity (or ability) η of the oldest workers. In their own words:

"That is the distribution of estimated abilities in the population of the oldest workers is approximately the same as the initial prior distribution of abilities for the youngest workers. The distribution of estimated (or expected) abilities in the population starts as a point mass $m_1(e)$ for new workers with education e and gradually spreads out to coincide (approximately) with the prior distribution of η " (o.c. 318).

HH prove (Theorem 2 ii, p 323) that the insurance premium that is deducted from expected productivity is strictly decreasing in precision h , that is, strictly increasing in the variance $1/h^2$.

In this paper, we set out to test the prediction that starting wages are lower if the perceived ability variance of new workers is larger. Rather surprisingly, the test

¹ The Harris and Holmstrom paper offers more predictions than the one on the insurance premium that we single out here. They match their predictions with stylized facts, not with new empirical work.

suggested by HH in their original paper has never been applied (see also Waldman (2007)). There is much work on the issue of wage rigidity itself and on the effect of product market shocks on wages, but that research has a completely different focus².

The Harris and Holmstrom paper is by no means old and forgotten. In August 2014, it had 161 citations on RePEc, with annual citations substantially increasing after the late 1990's. Just a quick scan of the citations in the last 10 years (2004 and later) reveals its status of a classic. It is cited in many working papers, including those in NBER and IZA series, by leading authors in the field (e.g. Acemoglu, Gibbons, Ichino, Katz, Meghir, Saez) and in top-ranked journals³. The model is simply accepted as part of the theoretical literature. For example, Low, Meghir and Pistaferri (2010, p 1441) state without any reservation in the *American Economic Review*: "We assume that there is no commitment from the side of the firm (or the worker), so Milton Harris and Bengt Holmstrom (1982)-type contracts are not implementable." Or, as Shi (2009, 563) notes in *Econometrica*: "Although heterogeneity, private information, and learning about productivity are important for wage dynamics and turnover in reality, as modeled by Jovanovic (1979), Harris and Holmstrom (1982), and Moscarini (2005), abstracting from them enables me to focus on search". Apparently, the Harris-Holmstrom model has the status of received (theoretical) wisdom.

2. Implementing the Harris-Holmstrom test.

Our aim is quite simply to apply the test as prescribed in the HH paper: relate the wages of new hires to the variance of wages for experienced workers in the same class, with experience sufficiently long to reveal ability. But as usual, real world data do not unequivocally match the clean controllable world of theoretical analysis.

In HH's model, all firms are identical and workers never leave a firm. In a static world, the latter assumption gives the employer first-hand information on the ability distribution in the pool of workers he hires from. In practice, we can not restrict the test to cohorts of workers entering a given firm, as this would rule out all small firms: calculating their own later wage variance would be subject to large measurement error in ability variance. Even for large firms it would not be justified to restrict the data on wage variance for experienced workers to employees that never leave the firm where they start their career: workers who later leave are an integral part of the

² See for example Baker, Gibbs and Holmstrom (1994) on downward rigidity and Guiso, Pistaferri and Schivardi (2005) on the effect of shocks to firms' value added on workers' wages. These papers also give further references on the topics.

³ E.g. 7 quotes in *Journal of Labor Economics*, 2 in *American Economic Review*, 2 in *Econometrica*, 3 in *Journal of Monetary Economics*.

cohort of entrants, and their departure may well be systematically related to their productivity. Thus, we will aim for measuring the wage dispersion of a given cohort of entrants as experienced workers no matter where they are found working. Restricting observations to workers that never leave the firm is not necessary: employers can observe where workers go when they leave the firm, and note job level and (approximate) pay. When ability (or productivity) is revealed elsewhere in the labour force, employers will certainly have access to indicators of this value. In this case we can indeed follow HH and look for later variance in the relevant initial population, wherever they have moved.

The phrasing and setting of HH suggest to use panel data: relate starting wages to the variance of wages in the same group of workers after they have sufficient experience to observe their true ability. This is exactly what we set out to do. But we will never be able to track down the full population. First, there will be attrition due to imperfections in the process of data collection. Fortunately, we can mitigate the problem of attrition in our labour market survey by also using administrative data from social security records. Second, there will be systematic reasons why we do not observe an experienced wage. Workers may be permanently or temporarily absent from paid employment: unemployment, sickness, disability, parental leave, exit from the labour force. For absence with some social security benefit, we can at least control for absence status from the the social security records. For non-participants we have no records at all, and hence we cannot distinguish between attrition due to imperfect registration and deliberate exit from the labour force. Labour force exit may bias our measure of variance, but the direction is hard to predict: it may be positive selection (a career or marriage leading to sufficient wealth), negative selection (potential wage too low) or exogenous causes (winning the lottery).

Instead of using panel data, one may also use cross-section data: relate starting wages to wage variance observed simultaneously for a similar group of workers with sufficient experience. In the static world of the HH model, the two methods would be equivalent and one can indeed read the HH recipe for testing also as referring to cross-section data. With cross-section data, larger sample sizes become available, but the drawback is of course that there may be relevant unobserved heterogeneity among cohorts. We will use both panel and cross-section data.

An issue not dealt with by HH but always relevant is the possible explanation of the observations by a competing theory. In this case, human capital theory is a potential alternative. Human capital theory predicts reduced starting wages from the cost of investment in on-the-job training charged to the worker. If investments are higher for worker categories with larger ability dispersion, this would lead to lower starting wages and with the higher ability dispersion showing up in higher wage dispersion for experienced workers, we would observe the same negative relationship as HH

predict. As higher human capital investment will also lead to higher wage growth, we can check this explanation by relating wage growth over the observation period to wage variance for experienced workers. If they are significantly related, lower starting wages can be explained from a higher insurance premium for higher ability variance as well as from higher deductions for investment in on-the-job training. A second way to distinguish the alternative explanations is to consider the development of wage dispersion. HH predict that the variance of wages will increase as true individual ability comes to replace estimated average ability as a determinant of wages. Human capital theory as specified by Mincer (1974) predicts that the variance will initially decrease, until the overtaking point around age 30-35, and then increase again: differences in intensity of investment in on-the-job training will generate an extra element of wage dispersion that will shrink as the investment fractions decline with advancing experience⁴. In the HH model, workers start with a uniform wage with uniform deduction for group risk, in the human capital model workers start with different wage deductions as they have different investment intensities. This distinction between uniform and differing deductions cannot be tested (at least, we will not attempt so), as the claim of uniform starting wages abstracts from many unobservable differences among individuals and the remaining claim of larger dispersion of starting wages according to human capital theory than according to HH's theory is no meaningful target for empirical testing. But differences in the age (experience) profile are amenable to testing and we will indeed do so.

The HH prediction concerns a relationship between mean and variance of the distribution of wages. There exists some notion that mean and dispersion are intrinsically positively related. To be more precise on this suspicion, let's suppose that a worker has only one of two possible skills, making blue paintings or red paintings. The levels of skill (number of paintings per month) are denoted by a_b and a_r , respectively and earnings y are found by multiplying by prices w_b and w_r . Let's first assume that both skills have equal means μ and standard deviations σ . It is then straightforward to derive

$$E(y_i) = \frac{w_i \mu}{w_i \sigma} \sigma(y_i) = \frac{\mu}{\sigma} \sigma(y_i), i = b, r$$

Mean earnings by skill are related linearly to the standard deviations by skill. Indeed a mechanical positive relationship as higher value of a skill raises both mean and standard deviation. Now suppose we measure earnings in logs. Then mean log earnings are affected by the skill prices w_i but standard deviations are not and we get

⁴ Polachek (2008) reports support for this U-shaped pattern.

$$E(\ln y_i) = \frac{E(\ln w_i) + \mu}{\sigma} \sigma(\ln y_i) = E(\ln w_i) + \mu$$

In other words, in logs the mean is independent from the standard deviation, the expected value of the correlation coefficient is zero.

If the skills are not identically distributed, the relationship will be affected by the relation between means and dispersions across skills. As far as we know there is no convincing evidence of a systematic positive or negative relationship at the level of the skills themselves, in terms of real outputs. In fact, there is a nasty measurement problem here for more realistic cases than blue and red paintings: how do you compare output distributions of legal advice and of management performance? Or, at a deeper level, of intellectual versus manual skills? Likewise, there is no compelling evidence that higher priced skills, with higher expected earnings, are also more dispersed in output volume. Hence, we see no reason to expect a systematic bias.

We have added an additional variable to represent wage dispersion, viz the skew (third moment about the mean). We did so, as (log) wage distributions are generally not symmetric and as earlier work on compensation for wage risk has shown this to be relevant (Hartog, 2011). None of our results in Table 3 and 4 changes if we exclude skew. It's just a little extra that we will discuss in the assessment of our results.

3. Our data

To test the hypothesis, we use data from the Portuguese *Quadros de Pessoal (QP)*, a longitudinal dataset that covers all workers in firms with at least one employee. The data are gathered annually by the Ministry of Economics, based on an inquiry that every establishment with wage-earners is obliged to fill in under legal obligation. Currently QP annually gathers information in a reference month (October) for more than 300,000 firms and 3 million workers (Portugal has about 10 million inhabitants). Given the mandatory nature of the inquiry and the fact that these data cover all wage earners in the private sector, problems associated with attrition are mitigated.

The QP contains detailed information on the workers, including gender, age, schooling, hours worked and monthly earnings split into several components, i.e. base wage, regular payments (e.g. seniority), irregular benefits (e.g. profits and premiums) and overtime payments. The QP also provides detailed information on the firm, such as geographic location, industry and size. The data are provided by the employer, which helps to restrain measurement errors. Civil servants and the self-employed are not covered by QP.

Initially, we aimed for a 10 year horizon, i.e observe employees from entering a firm at the the start of their working life and follow them for 10 years. Such a choice is arbitrary, but we just felt that 10 years is a reasonable period to let ability differences come to the surface. However, we encountered more sample attrition than we anticipated, and we decided to make up for it by combining QP with data from the Social Security Records. From the Social Security Records, we observe status in 2006. Social Security Records provide information regarding private and public employment on a monthly basis since January 2000. It is a matched employer-employee census and it excludes firms with individual pension funds and civil servants. The fact that we have an individual and a firm identifier that is common to the identifiers used in Quadros de Pessoal allows us to merge the two sources of information. As the Social Security data have been collected only more recently, we were forced to reduce our observation interval to 6 years, 2000-2006. To the extent possible by data availability we will check for robustness to time interval.

We defined labour market entrants by selecting employees in 2000 with less than 12 months of tenure, with age below or equal to 25. Tenure below 12 months identifies starters with the firm, the restriction on age identifies labour market entrants⁵. For multiple job holders, we take the job with the highest monthly hours.

(INSERT TABLE 1 ABOUT HERE)

Our QP base sample in 2000 has almost 90 000 starters. In 2006, we observe close to 60 000 of them as still employed according to QP. For the other 30 000 observations, we only know their status as reported in the Social Security Records. Table 1 gives details on the sample composition. Note that in the end we loose complete track of only 1% of our starters sample.

To measure the ability distribution in an individual's class, we use education, initial region and initial industry (in 2000). We use a minimum group size to calculate dispersion of 40 observations. In the base specification we use 20 education levels, 4 industries (Manufacturing; Construction; Commerce and Transports; Services) and 5 regions (North, Centro, Lisbon, Alentejo and Algarve), giving us 400 potential groups, reduced to 130 in the panel data and to 142 in the cross-section data on account of the minimum cell size limit. We cannot condition on all the variables observable by the employer (gender, age, region, full detail of education) as we need a decent

⁵ Initially, we defined labour market entrants by selecting employees in 2000 with less than 12 months of tenure, with potential experience between -3 and + 3 years. However, potential experience is defined as age minus years of education minus 6. This identification of labour market entrants based on their potential experience should have different windows according to the level of education. This identification made us loose around 90% of the potential yearly number of new labour market entrants, which is around 5% of the total number of workers (100000).

sample size to calculate variances. Ability dispersion is measured by the variance (and skew) of hourly earnings in 2006 for the class of individuals to which the individual belongs in 2000, i.e. from the 61 556 individuals still in the QP sample in 2006. The variables of our analysis have been defined and characterized in the Data Appendix.

4. Wage rigidity

As HH's claim is a wage premium to prevent wage decline the first step is to check for wage rigidity. For this purpose we use 10 years of our QP panel. In Table 2 the top panel presents data on nominal wage rigidity. A robust and solid check on wage rigidity would require a very detailed inspection of the data, as rigidity refers to absence of wage change if there is no change in any relevant condition of contract or effort: hours worked, job title, job location, fringe benefit entitlement, compensation for disamenities etc should all be constant. Our data do not allow that level of precision and we must necessarily accept some tolerance of unobserved changes in conditions and other measurement errors. Our observations refer to base wage for workers who are still with the same firm in the year indicated as they were initially in 2000. If we allow a nominal wage decline of at most 1% between two consecutive years, over the entire observation interval 85% of the wages is downward rigid. Looking at data for separate years, some 80% of the workers have a wage increase of 1% or more. Nominal wage declines are surely rare events. Real wage declines (nominal wage increases smaller than the change in the cost of living) are somewhat more frequent, in particular if one considers separate years.

(INSERT TABLE 2 ABOUT HERE)

5. Results on the wage premium

5.1 Base results on panel data

(INSERT TABLE 3 ABOUT HERE)

Table 3 gives test results for the panel data set, with starting wages in 2000 and variance and skew for the same sample of individuals in 2006. We start in column (1) with a standard Mincer earnings equation, except that we use age rather than potential experience to estimate lifecycle wage growth, as with potential experience we would lose many observations. Men earn 16% more than women, wages grow with age by some 3% per year, in services wages are 6 to 7% higher than in manufacturing, wages increase substantially with firm size, Lisbon and Alentejo have the highest wages. These results are robust across the analyses we present in this paper and need no more comment. The rate of return to an additional year of schooling, at just over 3% is quite low, but this is a consequence of our specification. With a standard Mincer equation on the QP data we get 9% returns on school years

and 4% on experience years, a conventional result for Portugal (Sousa, Portela and Sa 2015) report OLS estimates on the QP for each year from 1986 to 2009 varying between 9 and 10.5%). The return is cut in half if we restrict the sample to workers 25 years and older, as we do in our testing exercise.

In column (3) we note that variance has a significant positive and skew a significant negative effect on wages, squarely rejecting the HH prediction. Adding more variables does not affect this result, but the coefficients drop in magnitude (columns (3) – (8)). A noticeable drop in magnitude occurs when we measure education with two dummies for three variables (primary, secondary, tertiary) instead of Mincerian years of education. If we use a set of 7 level dummies for education the coefficients differ only marginally from the three-level dummy specification and the same holds if we use a set of 19 dummies to represent both level and type of education (not shown here). In column (8), we add dummies for the employee's status in 2006. Same firm means working in the same firm as in 2000, according to QP; the other dummies reflect status in 2006 recorded by social security administration: receiving unemployment benefit, receiving no benefit, being employed (self-employed, civil servant), or irretrievable. Later social security status has a significant effect on wages, and so does endurance of the employment relation, but inclusion of these variables does not affect the results on variance and skew. Thus, sample attrition from not working in 2006 produces no bias. The result that workers who in 2006 are still employed with the same firm have some 1% higher wages in 2000 than workers who come to work in a different firm suggests that employers have some additional information on labour market entrants: they can select workers who will appear to stay with them for at least 6 years and pay them higher wages. These workers must be attractive to them. Similarly, temporary or permanent absence from the labour force, or absence from the records, is foreshadowed in lower wages. This suggests that employers do have some additional information on their recruits. We will follow up on this notion by considering the effect of type of employment contract in section 5.4.

5.2 Base results on cross-section data

The conclusion from following the HH recipe is thus unequivocal: starting wages are not reduced by an insurance premium for the guarantee that wages will not be reduced if performance turns out to be below standard. To test robustness of this conclusion, we decided to give up the assumption of perfectly forward looking employers, and to calculate variance and skew contemporaneously, by using observations on similar individuals in 2000 who then already had 6-7 years of potential work experience. This allows to use the QP cross-section data and draw on the entire data set, rather than on the 6 year panel data potentially biased by several types of attrition. As noted above, this is not as precise as HH assume, as the

problem of attrition is now replaced by possible differences in unobserved heterogeneity among cohorts 6 years apart. Moreover, variance and skew are now calculated for groups defined by attachment after 6 years of experience rather than at labour market entry: workers may have changed region, industry and firm size. Yet it will also represent information that is more easily available to entrepreneurs as it requires easily available contemporaneous data.

(INSERT TABLE 4 ABOUT HERE)

As Table 4 shows, the results are essentially unchanged: variance has a significant positive effect, skew a significant negative effect. Controls have remarkably similar effects. The coefficient on the variance is more stable across specifications, except for column (6) for which we have no explanation. With all controls included, the difference in magnitude of the coefficient on variance is quite modest. We can conclude that both panel data and cross-section data lead to the same conclusion: unequivocal rejection of the HH prediction.

5.3 Robustness

In Table 5 we have collected essential results on robustness checks by estimating separately on subgroups, both with panel data and with cross-section data. We distinguish among workers who have stayed with the same firm and workers who have left their firm of entry, and we distinguish among the groups identified in the Social Security records. Essentially the results are unchanged, although in smaller samples precision may be low. The coefficient on variance is no different whether we estimate on stayers, movers or whether we restrict the sample to individuals observed in QP. The latter result indicates that sample attrition is not an issue.

We have experimented with different time frames and this also showed the results to be robust. Instead of using wage distributions from 2006 in the wage equation for 2000, we have used wage distributions in 2005 for wages in 1996 and distributions in 2009 and 2013 for wages in 2000. We also made additional checks to ensure we really identify first jobs. For the 2000 wage with 2006 variance we looked back to 1995 and to 1998 respectively to make sure that individuals did not hold a job already before 2000. All these checks confirmed our basic results.

(INSERT TABLE 5 ABOUT HERE)

5.4 Do employers use more information?

Both with panel data and with cross-section data, we noted that starting wages forshadow future status. Essentially workers who turn out to stay with the firm obtain a wage premium right at the start of their career. We figured that this might relate to the different contracts that employers offer their recruits. The data allow us to differentiate among 4 types of contract: without term (a tenured position), fixed term, temporary substitute (e.g. for a woman on maternity leave).

(INSERT TABLE 6 ABOUT HERE)

As Table 6 shows, there are some wage differences by contract, but the most interesting part is the interaction with risk. It turns out that only workers with a tenured position experience a significant wage effect of the variance (and actually also of the skew) in their ability distribution. Those workers that will eventually stay with the firm also get a higher salary at the start. Workers with a temporary contract or hired as a substitute do not see any effect of risk in their starting wage.

The results we found do not support the HH prediction. They do support the hypothesis of risk compensation for workers rather than for employers. As documented in Hartog (2011), one may note that investing in schooling is a risky investment. Potential students do not face a single, certain, wage rate after graduating but rather a wage distribution. Risk averse individuals will only invest in an education if they are compensated for the risk they face, on top of the compensation for the earnings forgone. A host of empirical studies, for several countries, have shown that market wages indeed offer compensation for the financial risk of an education. What's more, wages are reduced in response to skew of the post-graduate earnings distribution. This is exactly what the theory of expected utility maximization predicts. Declining absolute risk aversion implies an appreciation of skew, which means that individuals are willing to take a wage cut for facing a wage distribution with positive skew (Tsiang, 1972). Hence, the positive effect of wage variance and the negative effect of skew on starting wages are directly in line with the models and empirical results surveyed in Hartog (2011). They re-confirm that wages compensate for the uncertainty of the pay-off to an education.

One can take the argument a step further, by noting, first, that the extent of risk shifting will depend on the magnitudes of the elasticities of supply and demand and second, that two types of risk compete for compensation. Potential students will only invest in an education if they are sufficiently compensated for the uncertainty in the distribution of post-graduate wages. Potential employers will only hire a worker if they can accommodate the risk of unknown ability of the worker. In Berkhout, Hartog and Van Ophem (2014) we have measured heterogeneity of graduates by the distribution of school grades and indeed found that the risk of unknown productivity is shared by workers and firms depending on sector of economic activity and worker

and firm characteristics. Workers on a temporary contract bear a greater share of the risk than workers on other contracts. Our present results on the differences between types of contract are similar. Workers who have been offered a permanent contract (no-term contract) are presumably recognised as more desirable by the employer and their stronger market position pays off in higher compensation for the financial risk of their chosen education.

6. Human capital investment as an alternative explanation?

In section 2 we noted that human capital theory may provide an alternative explanation for a negative relationship between starting wage and later wage variance when individuals in groups with high ability variance, for some reason, invest more in human capital and hence have lower starting wage as investment cost is subtracted from their wage. We envisaged two tests of the human capital interpretation. The first is a test on the prediction of a negative relationship between starting wages and wage growth. If high-variance educations are high-ojt-investment educations, wage growth should relate negatively to the later wage variance. The negative relationship between starting wage and wage variance has already been refuted above. So we may consider the converse of our initial conjecture. If high-variance educations are low-ojt investment educations, we should observe a negative relation between wage growth and variance. But as Table 7 shows, we get the same positive effect on wage growth as on starting wages. The same result obtains if we estimate on all workers rather than on labour market entrants.

(INSERT TABLE 7 ABOUT HERE)

As a second test, we can check the dynamics of the variance: HH predict increasing variance, human capital predicts a U shape, with minimum around age 35 (we only observe the first part of the trajectory). As Figure 1 shows, the variance clearly increases with advancing experience. This does not support the human capital prediction of initial decline but it does support the HH prediction.

(INSERT FIGURE 1 ABOUT HERE)

7. Conclusion

We have tested the prediction by Harris and Holmstrom (1982) that starting wages are reduced by an insurance premium for employers' guarantee not to reduce a worker's wage if productivity is revealed to be below average. We applied, as strictly as we could, the test as indicated by Harris and Holmstrom themselves: measure the uncertainty on productivity by the variance of wages

for a cohort of labour market entrants when they have matured into experienced workers. The prediction is unequivocally rejected. The results do support the hypothesis that market wages contain a premium for the uncertainty that students face on their post-graduate wages when they decide on their education. This reinforces earlier empirical results on the latter.

Table 1 – Sample composition

	N	%
Starters in QP 2000	92996	100
Observed in QP 2006	61556	66
Same firm	20036	22
Different firm	41520	45
Not in QP 2006	31440	34
On unemployment benefit	3579	4
Not receiving any benefit	20340	22
Employed	6349	7
Not in Soc Sec Records	1172	1

Table 2. Base wage rigidity

Nominal (%)	Negative >=-10%	Negative >=-10%<-1%	Negative >=-1%<=1%	Positive>1%	Total
Total	6	9	35	50	100
2002	0	0	0	100	100
2003	3	2	14	81	100
2004	3	2	15	80	100
2005	3	2	15	80	100
2006	3	2	17	78	100
2007	3	2	15	80	100
2008	3	2	14	81	100
2009	4	13	32	50	100
Tenure 1 year	1	0	1	98	100
Tenure 2 years	4	2	16	77	100
Tenure 3 years	4	2	16	78	100
Tenure 4 years	3	2	16	78	100
Tenure 5 years	3	2	17	78	100
Tenure 6 years	3	2	17	78	100
Tenure 7 years	3	2	17	77	100
Tenure 8 years	3	2	17	78	100
Tenure 9 years	2	2	16	80	100
Without term contract	3	2	16	79	100
Fixed term contract	3	1	9	87	100
Temporary substitute	1	1	4	94	100
Without term contract (t=t-1)	3	2	15	81	100
Fixed term contract (t=t-1)	2	1	8	88	100
Temporary substitute (t=t-1)	1	0	3	96	100

Real(%)	Negative >=-10%	Negative >=-10%<-1%	Negative >=-1%<=1%	Positive>1%	Total
Total	4	18	28	50	100
2002	0	0	0	100	100
2003	4	20	19	57	100
2004	3	17	20	60	100
2005	3	17	20	61	100
2006	3	32	14	51	100
2007	3	17	15	65	100
2008	3	1	1	95	100
2009	4	3	43	50	100
Tenure 1 year	1	1	1	97	100
Tenure 2 years	4	17	12	66	100
Tenure 3 years	4	18	13	65	100
Tenure 4 years	4	18	14	64	100
Tenure 5 years	3	19	15	62	100
Tenure 6 years	3	20	15	62	100
Tenure 7 years	3	20	15	61	100
Tenure 8 years	3	19	15	62	100
Tenure 9 years	3	19	18	61	100
Without term contract	3	19	16	62	100
Fixed term contract	3	10	7	80	100
Temporary substitute	1	5	3	91	100
Without term contract (t=t-1)	3	17	15	65	100
Fixed term contract (t=t-1)	2	9	7	82	100
Temporary substitute (t=t-1)	1	3	2	94	100

Table 3. Base regression results

	(1)	(2)	(3)	(4)	(5)	(6)	(7)	(8)
Variance			0.875*** (0.027)	0.901*** (0.028)	0.774*** (0.027)	0.483*** (0.029)	0.302*** (0.031)	0.302*** (0.031)
Skewness			-0.036*** (0.001)	-0.052*** (0.001)	-0.042*** (0.001)	-0.018*** (0.002)	-0.009*** (0.002)	-0.009*** (0.002)
Male	0.159*** (0.002)	0.161*** (0.002)	0.152*** (0.002)	0.167*** (0.002)	0.162*** (0.002)	0.160*** (0.002)	0.161*** (0.002)	0.161*** (0.002)
Age	0.037*** (0.001)	0.033*** (0.000)	0.034*** (0.001)	0.033*** (0.001)	0.033*** (0.000)	0.032*** (0.000)	0.030*** (0.000)	0.029*** (0.000)
Age square	-0.000*** (0.000)	-0.000*** (0.000)	-0.000*** (0.000)	-0.000*** (0.000)	-0.000*** (0.000)	-0.000*** (0.000)	-0.000*** (0.000)	-0.000*** (0.000)
Construction		0.029*** (0.003)		-0.097*** (0.004)	-0.020*** (0.004)	-0.001 (0.004)	0.006 (0.004)	0.009** (0.004)
Commerce, Tourism, Transportation		0.013*** (0.003)		-0.057*** (0.003)	-0.008*** (0.003)	-0.007** (0.003)	0.010*** (0.003)	0.011*** (0.003)
Services		0.074*** (0.003)		0.053*** (0.003)	0.065*** (0.003)	0.056*** (0.003)	0.056*** (0.003)	0.056*** (0.003)
Medium firm (size)		0.146*** (0.003)			0.149*** (0.003)	0.146*** (0.003)	0.145*** (0.002)	0.144*** (0.002)
Large firm (size)		0.237*** (0.002)			0.252*** (0.002)	0.238*** (0.002)	0.244*** (0.002)	0.243*** (0.002)
Center		0.024*** (0.003)				0.013*** (0.003)	0.023*** (0.003)	0.023*** (0.003)
Lisbon		0.117*** (0.003)				0.090*** (0.003)	0.099*** (0.003)	0.099*** (0.003)
Alentejo		0.083*** (0.004)				0.069*** (0.004)	0.084*** (0.004)	0.084*** (0.004)
Algarve		0.003 (0.004)				0.007 (0.005)	0.010** (0.005)	0.009** (0.005)
Upper Secondary							0.091*** (0.003)	0.089*** (0.003)
Bachelor or more							0.537*** (0.008)	0.533*** (0.008)
Same firm								0.011*** (0.003)
SSR UB								-0.015*** (0.005)
SSR No Benefit								-0.024*** (0.003)
SSR Employed								-0.012*** (0.004)
SSR Lost								-0.041*** (0.009)
Years of Education	0.033*** (0.000)	0.022*** (0.000)	0.022*** (0.000)	0.018*** (0.000)	0.016*** (0.000)	0.018*** (0.000)		
Constant	-1.140*** (0.011)	-1.157*** (0.010)	-1.087*** (0.012)	-0.986*** (0.012)	-1.107*** (0.012)	-1.138*** (0.012)	-0.959*** (0.011)	-0.949*** (0.012)
Observations	92,996	92,996	92,996	92,996	92,996	92,996	92,996	92,996
R-squared	0.170	0.298	0.188	0.204	0.293	0.301	0.318	0.319

Standard errors in parentheses

*** p<0.01, ** p<0.05, * p<0.1

Notes: OLS baseline results using hourly total earnings as the dependent variable. Standard errors in parentheses where * p<0.01, ** p<0.05, * p<0.1.**

Table 4 – cross section results

	(1)	(2)	(3)	(4)	(5)	(6)	(7)	(8)
Variance			0.320*** (0.016)	0.326*** (0.018)	0.141*** (0.017)	-0.030 (0.019)	0.211*** (0.018)	0.206*** (0.018)
Skewness			-0.121*** (0.003)	-0.107*** (0.004)	-0.100*** (0.003)	-0.054*** (0.004)	-0.029*** (0.003)	-0.029*** (0.003)
Male	0.160*** (0.002)	0.160*** (0.002)	0.157*** (0.002)	0.165*** (0.002)	0.160*** (0.002)	0.159*** (0.002)	0.161*** (0.002)	0.160*** (0.002)
Age	0.038*** (0.001)	0.033*** (0.000)	0.035*** (0.001)	0.035*** (0.001)	0.035*** (0.000)	0.033*** (0.000)	0.030*** (0.000)	0.030*** (0.000)
Age square	-0.000*** (0.000)	-0.000*** (0.000)	-0.000*** (0.000)	-0.000*** (0.000)	-0.000*** (0.000)	-0.000*** (0.000)	-0.000*** (0.000)	-0.000*** (0.000)
Construction		0.034*** (0.004)		-0.035*** (0.004)	0.032*** (0.004)	0.028*** (0.004)	0.022*** (0.004)	0.025*** (0.004)
Commerce, Tourism, Transportation		0.008*** (0.003)		-0.038*** (0.003)	0.016*** (0.003)	0.008*** (0.003)	0.006** (0.003)	0.007** (0.003)
Services		0.071*** (0.003)		0.044*** (0.004)	0.067*** (0.003)	0.063*** (0.003)	0.042*** (0.003)	0.043*** (0.003)
Medium firm (size)		0.147*** (0.003)			0.151*** (0.003)	0.148*** (0.003)	0.145*** (0.003)	0.144*** (0.003)
Large firm (size)		0.237*** (0.002)			0.254*** (0.002)	0.238*** (0.002)	0.244*** (0.002)	0.243*** (0.002)
Center		0.023*** (0.003)				0.012*** (0.003)	0.027*** (0.003)	0.027*** (0.003)
Lisbon		0.117*** (0.003)				0.098*** (0.003)	0.090*** (0.003)	0.090*** (0.003)
Alentejo		0.082*** (0.004)				0.071*** (0.004)	0.095*** (0.004)	0.095*** (0.004)
Algarve		0.007 (0.005)				0.004 (0.005)	0.010** (0.005)	0.010** (0.005)
Upper Secondary							0.085*** (0.003)	0.083*** (0.003)
Bachelor or more							0.540*** (0.007)	0.536*** (0.007)
Same firm								0.012*** (0.003)
SSR UB								-0.012** (0.005)
SSR No Benefit								-0.022*** (0.003)
SSR Employed								-0.011*** (0.004)
SSR Lost								-0.039*** (0.009)
Years of Education	0.035*** (0.000)	0.025*** (0.000)	0.017*** (0.000)	0.018*** (0.000)	0.016*** (0.000)	0.021*** (0.000)		
Constant	-1.167*** (0.011)	-1.184*** (0.011)	-0.911*** (0.013)	-0.911*** (0.013)	-1.017*** (0.013)	-1.076*** (0.013)	-0.931*** (0.012)	-0.921*** (0.012)
Observations	92,243	92,243	92,243	92,243	92,243	92,243	92,243	92,243
R-squared	0.182	0.306	0.204	0.211	0.298	0.308	0.333	0.334

Standard errors in parentheses
 *** p<0.01, ** p<0.05, * p<0.1

Table 5

	Panel (1-7)							Cross-section (8-14)						
	(1)	(2)	(3)	(4)	(5)	(6)	(7)	(8)	(9)	(10)	(11)	(12)	(13)	(14)
	Changed firm	Same firm	Employed Quadros de Pessoal	SSR UB	SSR No Bene	SSR Employe	SSR Lost	Changed firm	Same firm	Employed Quadros de Pessoal	SSR UB	SSR No Bene	SSR Employe	SSR Lost
Variance	0.320*** (0.046)	0.330*** (0.062)	0.333*** (0.037)	0.221 (0.149)	0.163*** (0.062)	0.354*** (0.107)	0.017 (0.243)	0.220*** (0.028)	0.264*** (0.039)	0.233*** (0.023)	0.217** (0.096)	0.172*** (0.040)	0.173*** (0.068)	0.326** (0.144)
Skewness	-0.011*** (0.002)	-0.011*** (0.003)	-0.011*** (0.002)	-0.011 (0.007)	0.000 (0.003)	0.001 (0.006)	0.003 (0.011)	-0.028*** (0.005)	-0.035*** (0.007)	-0.032*** (0.004)	-0.041*** (0.018)	-0.013* (0.007)	-0.029** (0.013)	-0.005 (0.027)
Observations	39,889	19,655	59,544	3,422	19,562	6,072	1,299	39,592	19,578	59,170	3,414	19,372	6,028	1,291
R-squared	0.319	0.375	0.333	0.276	0.276	0.361	0.244	0.334	0.399	0.352	0.286	0.288	0.374	0.255

Standard errors in parentheses
*** p<0.01, ** p<0.05, * p<0.1

Table 6

	(1)	(2)	(3)	(4)	(5)	(6)	(7)	(8)
Variance		0.297*** (0.033)	0.298*** (0.033)	0.219*** (0.079)	0.224*** (0.083)	0.296*** (0.033)	0.297*** (0.033)	0.222*** (0.084)
Skewness		-0.008*** (0.001)	-0.008*** (0.001)	-0.007*** (0.001)	-0.007* (0.003)	-0.008*** (0.001)	-0.007*** (0.001)	-0.007** (0.003)
Male		0.162*** (0.002)	0.163*** (0.002)	0.163*** (0.002)	0.163*** (0.002)	0.161*** (0.002)	0.162*** (0.002)	0.162*** (0.002)
Age		0.025*** (0.001)	0.025*** (0.001)	0.025*** (0.001)	0.025*** (0.001)	0.024*** (0.001)	0.024*** (0.001)	0.024*** (0.001)
Age squared		-0.000*** (0.000)	-0.000*** (0.000)	-0.000*** (0.000)	-0.000*** (0.000)	-0.000*** (0.000)	-0.000*** (0.000)	-0.000*** (0.000)
Construction		0.008** (0.004)	0.008** (0.004)	0.008** (0.004)	0.008** (0.004)	0.011*** (0.004)	0.011*** (0.004)	0.011*** (0.004)
Commerce, Tourism, Transportation		0.013*** (0.003)	0.012*** (0.003)	0.012*** (0.003)	0.012*** (0.003)	0.014*** (0.003)	0.013*** (0.003)	0.013*** (0.003)
Services		0.061*** (0.003)	0.061*** (0.003)	0.060*** (0.003)	0.060*** (0.003)	0.062*** (0.003)	0.061*** (0.003)	0.061*** (0.003)
Medium firm (size)		0.145*** (0.003)	0.142*** (0.003)	0.142*** (0.003)	0.142*** (0.003)	0.144*** (0.003)	0.141*** (0.003)	0.141*** (0.003)
Large firm (size)		0.245*** (0.002)	0.240*** (0.003)	0.239*** (0.003)	0.239*** (0.003)	0.244*** (0.002)	0.238*** (0.003)	0.237*** (0.003)
Center		0.024*** (0.003)	0.023*** (0.003)	0.023*** (0.003)	0.022*** (0.003)	0.024*** (0.003)	0.022*** (0.003)	0.021*** (0.003)
Lisbon		0.104*** (0.003)	0.102*** (0.003)	0.102*** (0.003)	0.103*** (0.003)	0.104*** (0.003)	0.102*** (0.003)	0.103*** (0.003)
Alentejo		0.087*** (0.004)	0.085*** (0.004)	0.085*** (0.004)	0.085*** (0.004)	0.087*** (0.004)	0.085*** (0.004)	0.084*** (0.004)
Algarve		0.010** (0.004)	0.008* (0.004)	0.007 (0.004)	0.007 (0.004)	0.009** (0.004)	0.007 (0.004)	0.006 (0.004)
Upper secondary		0.095*** (0.003)	0.095*** (0.003)	0.096*** (0.003)	0.096*** (0.003)	0.093*** (0.003)	0.092*** (0.003)	0.094*** (0.003)
Bachelor or more		0.546*** (0.011)	0.547*** (0.011)	0.548*** (0.011)	0.549*** (0.011)	0.542*** (0.011)	0.544*** (0.011)	0.545*** (0.011)
Without term contract			-0.008** (0.004)	-0.044*** (0.014)	-0.026 (0.019)		-0.009** (0.004)	-0.044*** (0.014)
Fixed term contract			0.006 (0.004)	0.016 (0.014)	0.006 (0.019)		0.008* (0.004)	0.017 (0.014)
Temporary substitute			-0.022** (0.009)	-0.066 (0.066)	-0.118 (0.085)		-0.022** (0.009)	-0.118 (0.085)
Without term contract * variance				0.209** (0.084)	0.172* (0.089)			0.206** (0.084)
Fixed term contract * variance				-0.047 (0.084)	-0.026 (0.090)			-0.048 (0.084)
Temporary substitute * variance				0.253 (0.392)	0.356 (0.425)			0.254 (0.392)
Without term contract * skewness				-0.007* (0.004)	-0.007* (0.004)			-0.006* (0.004)
Fixed term contract * skewness					0.005 (0.004)			0.005 (0.004)
Temporary substitute * skewness					0.022* (0.011)			0.022* (0.011)
Same firm						0.013*** (0.003)	0.014*** (0.003)	0.014*** (0.003)
SSR UB						-0.012** (0.005)	-0.013** (0.005)	-0.013*** (0.005)
SSR No Benefit						-0.022*** (0.003)	-0.022*** (0.003)	-0.022*** (0.003)
SSR Employed						-0.011*** (0.004)	-0.010*** (0.004)	-0.011*** (0.004)
SSR Lost						-0.040*** (0.008)	-0.041*** (0.008)	-0.041*** (0.008)
Constant		-0.861*** (0.013)	-0.858*** (0.013)	-0.845*** (0.018)	-0.847*** (0.021)	-0.852*** (0.013)	-0.850*** (0.013)	-0.837*** (0.021)
Observations		89,899	89,899	89,899	89,899	89,899	89,899	89,899
R-squared		0.322	0.322	0.322	0.323	0.323	0.323	0.324

Robust standard errors in parentheses
*** p<0.01, ** p<0.05, * p<0.1

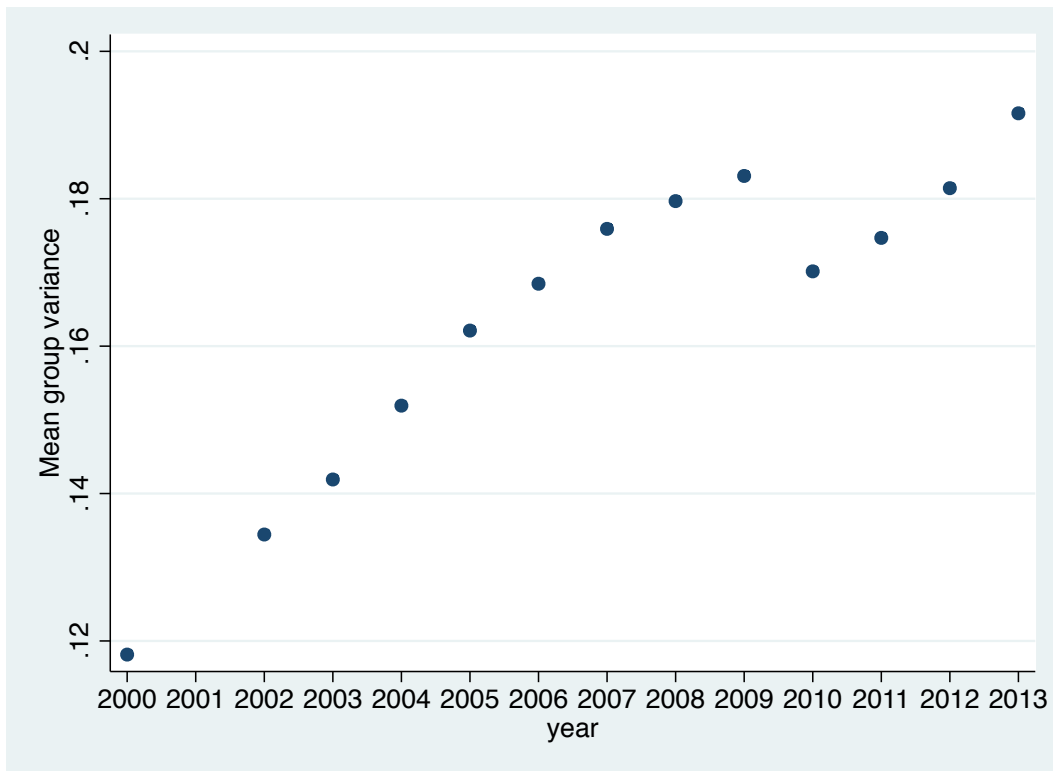
Table 7 – dependent variable: log wage 2006 - log wage 2000

	(1)	(2)	(3)	(4)	(5)	(6)	(7)	(8)
Variance			0.569*** (0.045)	0.477*** (0.047)	0.529*** (0.047)	0.626*** (0.051)	0.523*** (0.055)	0.523*** (0.055)
Skewness			-0.020*** (0.002)	-0.012*** (0.002)	-0.016*** (0.002)	-0.018*** (0.003)	-0.015*** (0.003)	-0.015*** (0.003)
Male	0.063*** (0.004)	0.062*** (0.004)	0.060*** (0.004)	0.058*** (0.004)	0.061*** (0.004)	0.061*** (0.004)	0.062*** (0.004)	0.062*** (0.004)
Age	-0.008*** (0.001)	-0.009*** (0.001)	-0.010*** (0.001)	-0.010*** (0.001)	-0.010*** (0.001)	-0.010*** (0.001)	-0.011*** (0.001)	-0.011*** (0.001)
Age square	0.000*** (0.000)	0.000*** (0.000)	0.000*** (0.000)	0.000*** (0.000)	0.000*** (0.000)	0.000*** (0.000)	0.000*** (0.000)	0.000*** (0.000)
Construction		0.039*** (0.006)		0.038*** (0.007)	0.012* (0.007)	0.007 (0.007)	0.009 (0.007)	0.009 (0.007)
Commerce, Tourism, Transportation		0.047*** (0.005)		0.043*** (0.005)	0.028*** (0.005)	0.024*** (0.005)	0.032*** (0.005)	0.032*** (0.005)
Services		0.026*** (0.006)		0.012** (0.006)	0.007 (0.006)	0.005 (0.006)	0.007 (0.006)	0.007 (0.006)
Medium firm (size)		-0.043*** (0.004)			-0.043*** (0.004)	-0.043*** (0.004)	-0.043*** (0.004)	-0.043*** (0.004)
Large firm (size)		-0.090*** (0.004)			-0.090*** (0.004)	-0.089*** (0.004)	-0.086*** (0.004)	-0.086*** (0.004)
Center		0.006 (0.006)				-0.007 (0.006)	-0.002 (0.006)	-0.002 (0.006)
Lisbon		0.020*** (0.005)				-0.011** (0.005)	-0.006 (0.005)	-0.006 (0.005)
Alentejo		0.002 (0.007)				-0.013* (0.007)	-0.007 (0.008)	-0.007 (0.008)
Algarve		0.029*** (0.008)				0.036*** (0.008)	0.036*** (0.008)	0.036*** (0.008)
Upper Secondary							0.062*** (0.005)	0.062*** (0.005)
Bachelor or more							0.187*** (0.014)	0.187*** (0.014)
Same firm								-0.004 (0.004)
Years of Education	0.015*** (0.001)	0.016*** (0.001)	0.009*** (0.001)	0.010*** (0.001)	0.011*** (0.001)	0.011*** (0.001)		
Constant	0.226*** (0.019)	0.242*** (0.019)	0.256*** (0.020)	0.223*** (0.021)	0.258*** (0.021)	0.252*** (0.021)	0.352*** (0.021)	0.352*** (0.021)
Observations	58,897	58,897	58,897	58,897	58,897	58,897	58,897	58,897
R-squared	0.015	0.027	0.020	0.021	0.029	0.030	0.030	0.030

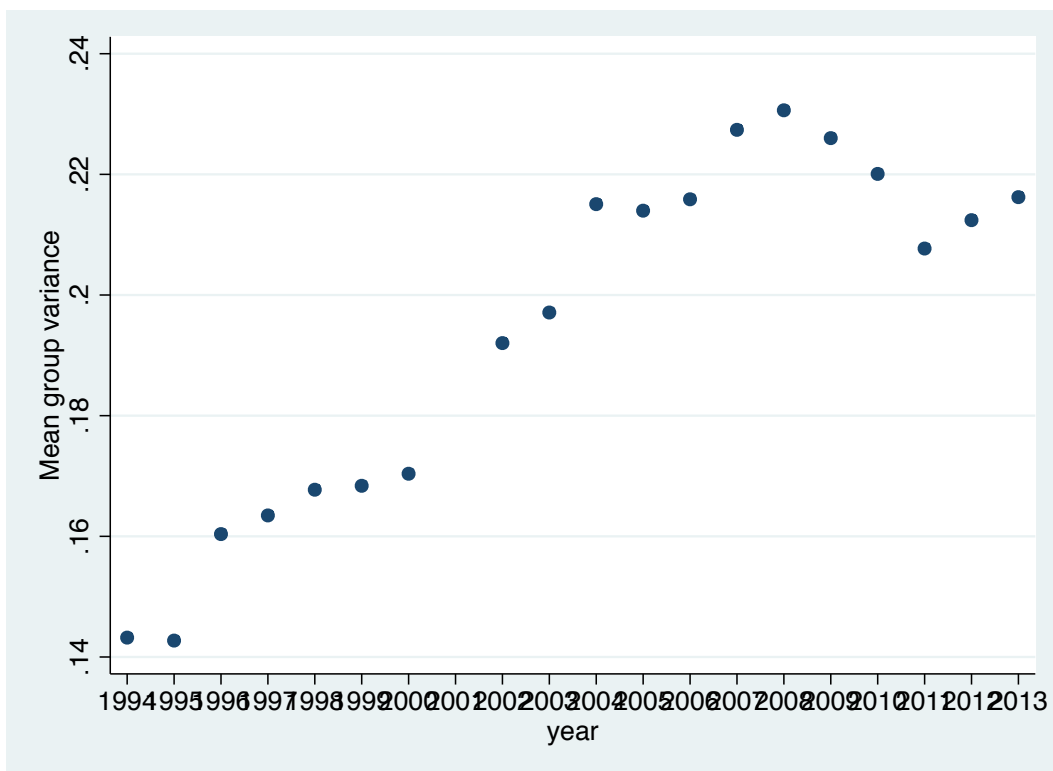
Standard errors in parentheses

*** p<0.01, ** p<0.05, * p<0.1

Figure 1 – Group mean variance, by year



a) first job in 2000 and follow up to 2013



a) first job in 1994 and follow up to 2013

DATA APPENDIX

Table A1 – Definitions

The table list all variables used to predict the log of the hourly wage.

Variable	Description
Base wage	Labor earnings that are fixed and paid regularly on a monthly base.
Total earnings	The sum of base wage, regular payments (e.g., seniority and transportation), irregular benefits (profits and premium), and overtime hours payments.
Normal hours	Actual hours during a normal week at the going wage.
Overtime hours	Time worked in a week at an overtime premium (50% for the first hour, 75% for additional hours).
Total hours	Sum of normal and overtime hours.
Hourly earnings	Ratio between total earnings and total hours.
Education level	See list below, in Table A2.
Firm size	The number of workers currently working in the firm. 3 categories: Small firm (Less than 19 workers), medium firm (19-89 workers), large firm (90 or more).
Industry	Four categories were defined: (1)Manufacturing, (2) Construction, (3)Commerce and Transports, (4) Services (e.g. Financial, Education/Health).
Region	Five categories were defined: North, Centro, Lisbon, Alentejo and Algarve

Table A2 – Descriptive statistics

This table reports summary statistics (mean, standard deviation, minimum and maximum) for the year 2000. Variables represented are those described in detail in Table A1. The units are explained in front of the variables, while gender, industry, labour market state in 2006, education, firm size and region are shown as percentage.

	Mean	Standard Deviation	Min	Max
Variance 2006	0.18	0.05	0.05	0.48
Skewness 2006	1.53	0.90	-0.79	4.15
Total real wage (2008 euros)	607.26	104.63	210.46	26570.90
Total real hourly wage (2008 euros)	3.55	0.62	1.65	164.02
Total real hourly wage (log)	0.02	0.35	-0.67	3.93
Total monthly hours	171.19	11.30	74.00	346.00
Male	0.56	0.50		
Age	21.93	9.64	14.33	2000.83
Years of Education	8.38	2.98	4.00	16.00
Education(5 categories):				
Basic School	0.12	0.33		
Preparatory	0.27	0.45		
Lower secondary	0.30	0.46		
Upper secondary	0.27	0.44		
Bachelor	0.02	0.13		
College	0.02	0.15		
Industry (4 categories):				
Manufacturing	0.29	0.45		
Construction	0.13	0.33		
Commerce, Tourism, Transportation	0.40	0.49		
Services	0.19	0.39		
Employed in 2006: Changed firm	0.45	0.50		
Employed in 2006: Same firm	0.22	0.41		
Social security records: Unemployment benefit	0.04	0.19		
Social security records: Not receiving Unemployment benefits	0.22	0.41		
Social security records: Employed	0.07	0.25		
Social security records: status unknown	0.01	0.11		
Firm size (3 categories):				
Small firm (-18 workers)	0.42	0.49		
Medium firm (19-89 workers)	0.25	0.43		
Large firm (90+ workers)	0.33	0.47		
Region (5 categories):				
North	0.33	0.47		
Center	0.13	0.34		
Lisbon	0.41	0.49		
Alentejo	0.08	0.26		
Algarve	0.06	0.24		

Figure A1 – Mean hourly wage and variance in 2006, by group category

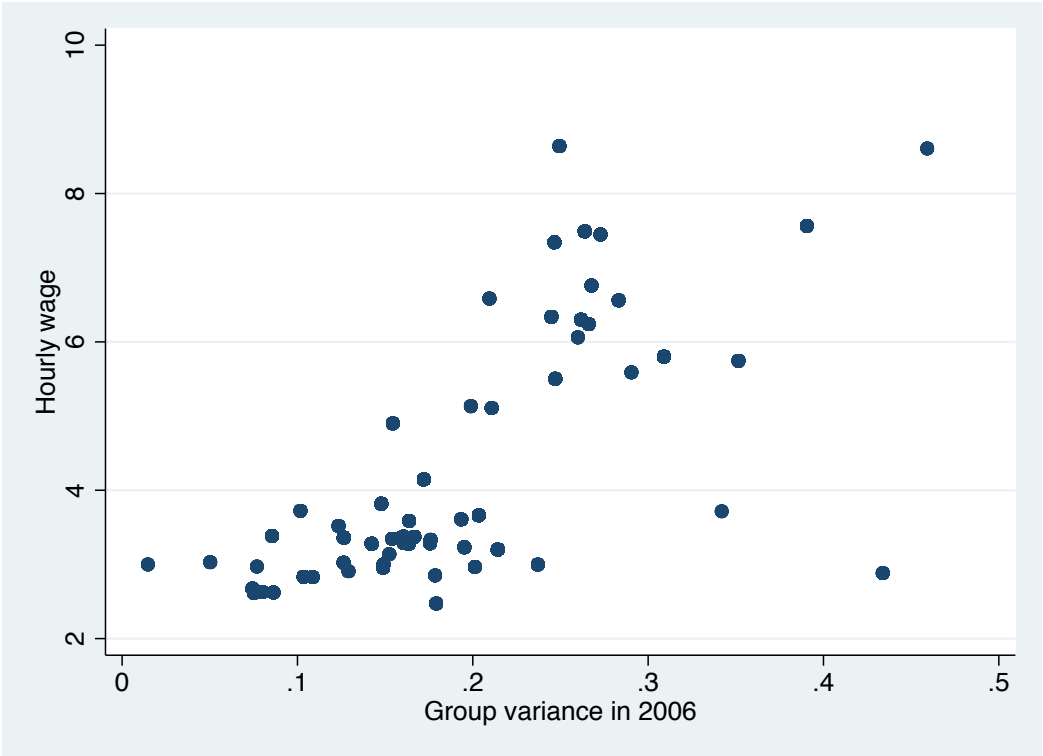


Figure A2 – Mean hourly wage and skewness in 2006, by group category

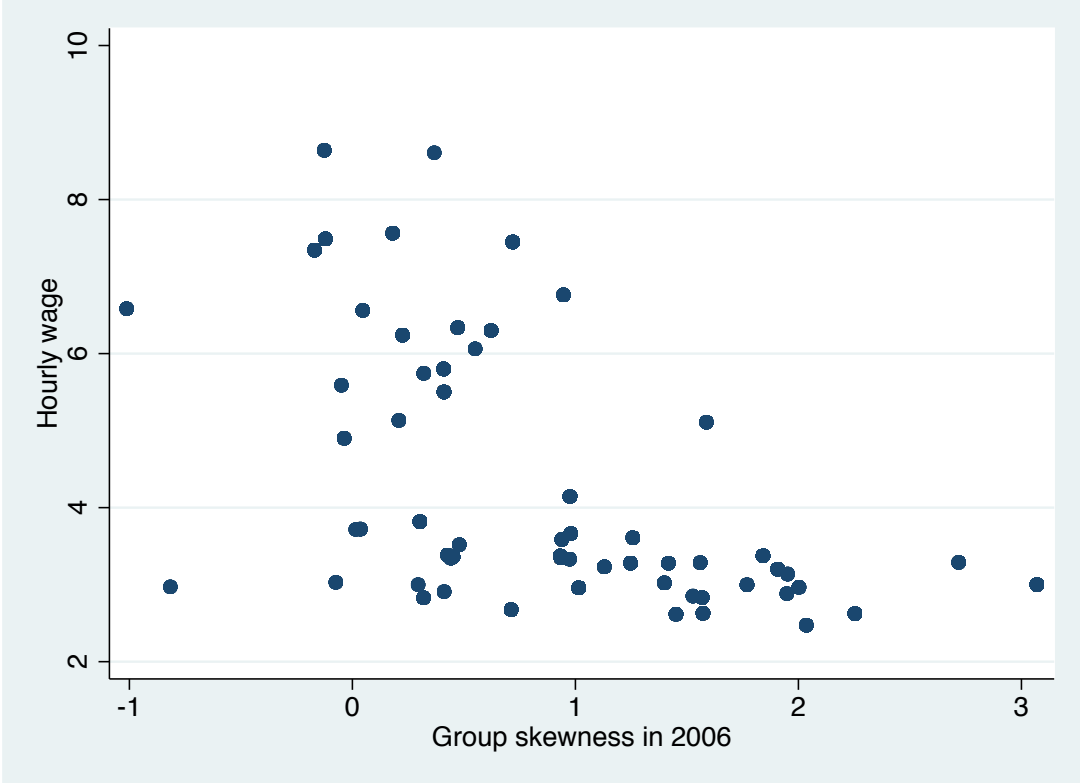


Table A4 – Correlation matrix

	Variance 2006	Skewness 2006	Total real wage (2008 euros)	Total real hourly wage (2008 euros)	Total real hourly wage (log)	Total hours	Male	Age	Manufacturing	Construction	Commerce, Tourism, Transportation	Services
Variance 2006	1											
Skewness 2006	-0.438***	1										
Total real wage (2008 euros)	0.456***	-0.376***	1									
Total real hourly wage (2008 euros)	0.466***	-0.377***	0.985***	1								
Total real hourly wage (log)	0.589***	-0.484***	0.875***	0.885***	1							
Total hours	-0.163***	0.0994***	-0.0460***	-0.193***	-0.204***	1						
Male	-0.0654***	0.0186*	0.0783***	0.0614***	0.0616***	0.0836***	1					
Age	0.716***	-0.585***	0.483***	0.493***	0.620***	-0.173***	-0.0828***	1				
Manufacturing	-0.331***	0.0269**	-0.109***	-0.119***	-0.143***	0.0809***	0.0642***	-0.178***	1			
Construction	0.0574***	0.0167	-0.0477***	-0.0477***	-0.0603***	-0.0119	0.195***	-0.0838***	-0.163***	1		
Commerce, Tourism, Transportation	-0.0140	0.0516***	-0.0791***	-0.0950***	-0.126***	0.122***	-0.0436***	-0.0821***	-0.445***	-0.229***	1	
Services	0.291***	-0.0898***	0.214***	0.240***	0.302***	-0.198***	-0.127***	0.302***	-0.366***	-0.188***	-0.514***	1
Employed in 2006 (change firm)	0.0633***	-0.0201*	0.0211*	0.00917	0.0219*	0.0448***	0.0204*	0.0383***	-0.0439***	0.00817	0.0267**	0.00788
Employed in 2006 (same firm)	0.0184*	-0.0523***	0.0340***	0.0401***	0.0578***	-0.0387***	-0.0210*	0.0579***	0.0514***	-0.0243**	-0.0417***	0.0105
Unemployed in 2006	-0.0300***	0.0192*	-0.0395***	-0.0376***	-0.0409***	0.00148	-0.0628***	-0.0258**	0.0141	-0.0174	0.00593	-0.00934
Non participating labor market in 2006	-0.0799***	0.0680***	-0.0425***	-0.0355***	-0.0668***	-0.0139	0.0230*	-0.0921***	-0.00626	0.0220*	0.00835	-0.0159
Small firm (18- workers)	-0.0980***	0.0897***	-0.219***	-0.214***	-0.288***	-0.0287**	-0.0306***	-0.0994***	-0.151***	0.0605**	0.0908**	0.00962
Medium firm (19-89 workers)	0.00413	0.0136	0.0177	0.0297**	0.0270**	-0.0794***	0.0161	0.00806	0.0434***	0.00522	-0.0227*	-0.0195*
Large firm (90+ workers)	0.0918***	-0.100***	0.197***	0.181***	0.256***	0.102**	0.0150	0.0896***	0.107***	-0.0639***	-0.0676***	0.00866
Years of education	0.826***	-0.693***	0.521***	0.533***	0.675***	-0.191***	-0.101***	0.845***	-0.197***	-0.0942***	-0.0931***	0.338***
Lower secondary	-0.527***	0.520***	-0.254***	-0.255***	-0.360***	0.0603***	0.117***	-0.543***	0.204**	0.130***	-0.0343***	-0.230***
Upper secondary	-0.344***	0.188***	-0.317***	-0.332***	-0.372***	0.159***	-0.0263**	-0.348***	-0.0188*	-0.0507***	0.160***	-0.123***
Bachelor	0.772***	-0.603***	0.533***	0.548***	0.673***	-0.215***	-0.0633***	0.790***	-0.139***	-0.0472***	-0.142***	0.308***
Preparatory	-0.00611	0.0129	-0.0114	-0.0111	-0.0153	-0.0000160	0.0116	0.0332***	0.000391	0.0118	-0.00503	-0.00189
Lower secondary	-0.527***	0.520***	-0.254***	-0.254***	-0.360***	0.0603***	0.117***	-0.545***	0.204**	0.129***	-0.0341***	-0.230***
Upper secondary	-0.344***	0.188***	-0.317***	-0.332***	-0.372***	0.159***	-0.0263**	-0.348***	-0.0188*	-0.0507***	0.160***	-0.123***
Bachelor	0.371***	-0.311***	0.150***	0.154***	0.226***	-0.0899***	-0.0385***	0.363***	-0.0632***	-0.0179*	-0.0412***	0.113***
College	0.594***	-0.448***	0.489***	0.503***	0.590***	-0.175***	-0.0425***	0.618***	-0.109***	-0.0399***	-0.129***	0.263***
North	-0.133***	0.331***	-0.147***	-0.150***	-0.201***	0.0361***	0.00865	-0.156***	0.235***	0.0378***	-0.0841***	-0.153***
Center	-0.161***	-0.0447***	-0.0962***	-0.0942***	-0.117***	0.00574	0.0241**	-0.0506***	0.128***	0.0542***	-0.0586***	-0.0890***
Lisbon	0.330***	-0.255***	0.245***	0.241***	0.310***	-0.0243**	-0.0143	0.234***	-0.233***	-0.0740***	0.0324***	0.227***
Alentejo	-0.0555***	-0.0978***	-0.0410***	-0.0388***	-0.0355***	-0.0119	-0.0147	-0.0376***	-0.0537***	-0.00190	0.0682***	-0.0213*
Algarve	-0.158***	0.0713***	-0.0557***	-0.0482***	-0.0679***	-0.0133	-0.00372	-0.0810***	-0.0810***	0.0104	0.101***	-0.0377***

* p<0.05; ** p<0.01; *** p<0.001

	Employed in 2006 (change firm)	Employed in 2006 (same firm)	Unemployed in 2006	Non participating labor market in 2006	Small firm (18- workers)	Medium firm (19-89 workers)	Large firm (90+ workers)
Variance 2006							
Skewness 2006							
Total real wage (2008 euros)							
Total real hourly wage (2008 euros)							
Total real hourly wage (log)							
Total hours							
Male							
Age							
Manufacturing							
Construction							
Commerce, Tourism, Transportation							
Services							
Employed in 2006 (change firm)	1						
Employed in 2006 (same firm)	-0.547***	1					
Unemployed in 2006	-0.174***	-0.104***	1				
Non participating labor market in 2006	-0.543***	-0.324***	-0.103***	1			
Small firm (18- workers)	0.0145	-0.0590***	0.0153	0.0361***	1		
Medium firm (19-89 workers)	-0.0258**	0.0128	0.00133	0.0166	-0.449***	1	
Large firm (90+ workers)	0.00976	0.0457***	-0.0162	-0.0506***	-0.561***	-0.488***	1
Years of education	0.0403***	0.0575***	-0.0284**	-0.0930***	-0.115***	0.0145	0.0988***
Lower secondary	-0.0367***	-0.0450***	0.00697	0.0850***	0.0569***	0.0492***	-0.101***
Upper secondary	-0.00267	-0.0129	0.0263**	0.00530	0.0690***	-0.0813***	0.00796
Bachelor	0.0314***	0.0486***	-0.0332***	-0.0717***	-0.117***	0.0476***	0.0702***
Preparatory	0.000786	-0.0104	-0.00330	0.0109	0.00614	-0.00125	-0.00484
Lower secondary	-0.0368***	-0.0445***	0.00714	0.0846***	0.0566***	0.0493***	-0.101***
Upper secondary	-0.00267	-0.0129	0.0263**	0.00530	0.0690***	-0.0813***	0.00796
Bachelor	0.0123	0.0390***	-0.0143	-0.0476***	-0.0346***	0.0429***	-0.00597
College	0.0262**	0.0255**	-0.0267**	-0.0451***	-0.106***	0.0215*	0.0838***
North	-0.0451***	0.0193*	0.0284**	0.0215*	0.0478***	0.0546***	-0.0973***
Center	-0.0320***	0.0225*	0.00648	0.0119	0.0751***	0.0296**	-0.101***
Lisbon	0.0761***	-0.0362***	-0.0213*	-0.0436***	-0.162***	-0.0692***	0.222***
Alentejo	-0.00260	-0.00339	-0.00545	0.00866	0.111***	-0.0107	-0.0986***
Algarve	-0.0268**	0.0117	-0.0129	0.0247**	0.0234*	0.0116	-0.0336***

* p<0.05; ** p<0.01;*** p<0.001

	Years of education	Lower secondary	Upper secondary	Bachelor	Preparatory	Lower secondary	Upper secondary	Bachelor	College	North	Center	Lisbon	Alentejo	Algarve
Variance 2006														
Skewness 2006														
Total real wage (2008 euros)														
Total real hourly wage (2008 euros)														
Total real hourly wage (log)														
Total hours														
Male														
Age														
Manufacturing														
Construction														
Commerce, Tourism, Transportation														
Services														
Employed in 2006 (change firm)														
Employed in 2006 (same firm)														
Unemployed in 2006														
Non participating labor market in 2006														
Small firm (18- workers)														
Medium firm (19-89 workers)														
Large firm (90+ workers)														
Years of education	1													
Lower secondary	-0.687***	1												
Upper secondary	-0.352***	-0.438***	1											
Bachelor	0.905***	-0.315***	-0.715***	1										
Preparatory	-0.0504***	0.0414***	-0.0181*	-0.0130	1									
Lower secondary	-0.686***	0.999***	-0.437***	-0.314***	-0.00797	1								
Upper secondary	-0.352***	-0.438***	1	-0.715***	-0.0181*	-0.437***	1							
Bachelor	0.450***	-0.156***	-0.355***	0.497***	-0.00648	-0.156***	-0.355***	1						
College	0.684***	-0.238***	-0.541***	0.756***	-0.00985	-0.238***	-0.541***	-0.193***	1					
North	-0.168***	0.201***	-0.0515***	-0.102***	0.0184*	0.200***	-0.0515***	-0.0153	-0.103***	1				
Center	-0.0579***	0.0370***	0.0239**	-0.0539***	0.00706	0.0367***	0.0239**	0.00451	-0.0644***	-0.239***	1			
Lisbon	0.249***	-0.220***	-0.0255**	0.198***	-0.0167	-0.219***	-0.0255**	0.0450***	0.189***	-0.586***	-0.342***	1		
Alentejo	-0.0423***	-0.00481	0.0587***	-0.0583***	-0.00508	-0.00456	0.0587***	-0.0168	-0.0532***	-0.179***	-0.104***	-0.256***	1	
Algarve	-0.0775***	0.0313***	0.0556***	-0.0832***	-0.00451	0.0315***	0.0558***	-0.0538***	-0.0535***	-0.159***	-0.0928***	-0.227***	-0.0693***	1

* p<0.05; ** p<0.01;*** p<0.001

References

- Baker, G., M. Gibbs and B. Holmstrom (1994), The wage policy of a firm, *Quarterly Journal of Economics*, 109 (4), 921-955
- Berkhout, P., J. Hartog and H. van Ophem (2014), Starting wages respond to employer's risk, *Scottish Journal of Political Economy*, 61 (3), 229-260
- Guiso, L., L. Pistaferri and F. Schivardi (2005), Insurance within the firm, *Journal of Political Economy*, 113 (5), 1054-1087
- Harris, M. and B. Holmstrom (1982), A Theory of Wage Dynamics, *Review of Economic Studies*, 49 (3), 315-33
- Hartog, J. (2011), A Risk Augmented Mincer earnings equation? Taking stock. *Research in Labor Economics*, 33, 129-173
- Low, C. Meghir and L. Pistaferri (2013), Wage and employment risk over the lifecycle, *American Economic Review*, 100 (4)
- Polachek, S. (2008), Earnings Over the Life Cycle: The Mincer Earnings Function and Its Applications, *Foundations and Trends(R) in Microeconomics*, NOW publishers, 4(3), 165-272
- Shi, S. (2009), Directed Search for Equilibrium Wage–Tenure Contracts, *Econometrica*, 77 (2), 561-584
- Sousa, S., M. Portela and C. Sa (2015), Characterization of returns to education in Portugal:1986-2009, Working Paper from Escola de Economia e Gestão, Universidade do Minho
- Tsiang, S.C. (1972), The rationale for mean-standard deviation analysis, skewness preference and the demand for money, *American Economic Review*, 62 (3), 354-371
- Waldman, M. (2007), Theory and evidence in internal labor markets, MPRA Paper 5113, University Library of Munich, Germany.